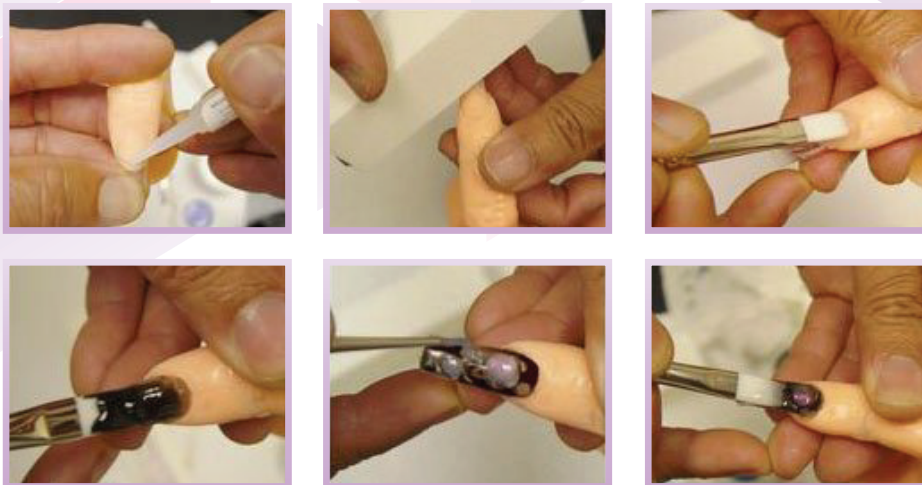


BASIC ONE DESIGNER GEL TUTORIAL

STEP BY STEP • HOW TO TUTORIAL



- 1-2. Prep nails as usual, making sure the nail beds are thoroughly buffed of all shine and dead skin.
3. Follow the first gel application per Basic One Clear Gel application instructions.
4. Polish a layer of Basic One Black Designer Gel. Do not cure, proceed.
5. Using the detail brush and Basic One French White Gel, brush on small stripes back and forth. Clean the brush then apply small and medium size dots throughout nail bed. Let gel self level for 30 seconds. Cure for 1 minute. Alternate fingers/hands.
6. Apply a final layer of Clear Gel per the Clear Gel application instructions. Cure for three minutes. Wipe the nails with Basic One Wiping Solution and shape the edges of the nails as desired.

Please Note:

- If entire gel nails are soft and peel off within hours/days, this means that the nails were under cured.
- If nails break/crack, are bendable, or chip/crack; this means that the gel application was too thin.
- If gel lifts around cuticle area, this means lack of prepping. If necessary, for oily nails, wipe with Wiping Solution twice prior to gel application.

For technical support, please call us anytime during business hours at **(951) 808-4730**.